

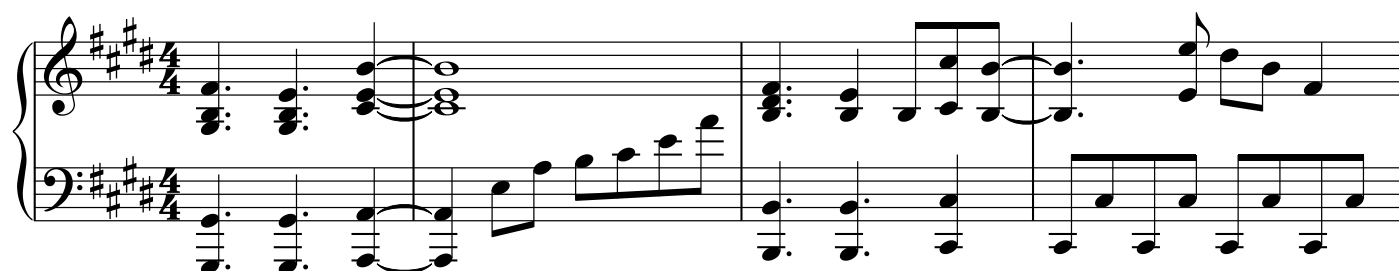
Precious Memories

Kimi Ga Nozomu Eien OP(君が望む永遠)

♩ = 145

Arranged by dimemannico2

Transcribed by GovzLegacy



21

Measures 21-24 of a musical score in A major (three sharps). The right hand features a melodic line with eighth and sixteenth notes, while the left hand provides a steady eighth-note accompaniment. Measure 24 includes a whole rest in the right hand.

25

Measures 25-27. The right hand continues the melodic development with eighth notes and some beamed sixteenth notes. The left hand maintains the eighth-note accompaniment.

28

Measures 28-30. The right hand uses more complex rhythmic patterns, including beamed eighth and sixteenth notes. The left hand continues with the eighth-note accompaniment.

31

Measures 31-33. The right hand features a series of chords and moving lines. The left hand continues the eighth-note accompaniment.

34

Measures 34-37. The right hand has a dense texture with many beamed sixteenth notes. The left hand continues the eighth-note accompaniment.

38

Measures 38-41. The right hand continues with a dense texture of beamed sixteenth notes. The left hand continues the eighth-note accompaniment.

42

Measures 42-45 of a musical score in A major (three sharps). The right hand features a series of chords and a melodic line, while the left hand plays a continuous eighth-note pattern. Measure 42 starts with a treble clef and a key signature of three sharps. The right hand has a series of chords (F#4, C#5, G#4, F#4) and a melodic line (A4, B4, C#5, D5, E5, D5, C#5, B4, A4). The left hand has a continuous eighth-note pattern (F#3, G#3, A3, B3, C#4, D4, E4, F#4, G#4, A4, B4, C#5, D5, E5, D5, C#5, B4, A4). Measures 43-45 continue this pattern with various chordal textures and melodic variations.

46

Measures 46-48 of a musical score in A major. The right hand features a series of chords and a melodic line, while the left hand plays a continuous eighth-note pattern. Measure 46 starts with a treble clef and a key signature of three sharps. The right hand has a series of chords (F#4, C#5, G#4, F#4) and a melodic line (A4, B4, C#5, D5, E5, D5, C#5, B4, A4). The left hand has a continuous eighth-note pattern (F#3, G#3, A3, B3, C#4, D4, E4, F#4, G#4, A4, B4, C#5, D5, E5, D5, C#5, B4, A4). Measures 47-48 continue this pattern with various chordal textures and melodic variations.

49

Measures 49-51 of a musical score in A major. The right hand features a series of chords and a melodic line, while the left hand plays a continuous eighth-note pattern. Measure 49 starts with a treble clef and a key signature of three sharps. The right hand has a series of chords (F#4, C#5, G#4, F#4) and a melodic line (A4, B4, C#5, D5, E5, D5, C#5, B4, A4). The left hand has a continuous eighth-note pattern (F#3, G#3, A3, B3, C#4, D4, E4, F#4, G#4, A4, B4, C#5, D5, E5, D5, C#5, B4, A4). Measures 50-51 continue this pattern with various chordal textures and melodic variations. Measure 51 ends with a double bar line.